

DATI TECNICI P 240 AXE

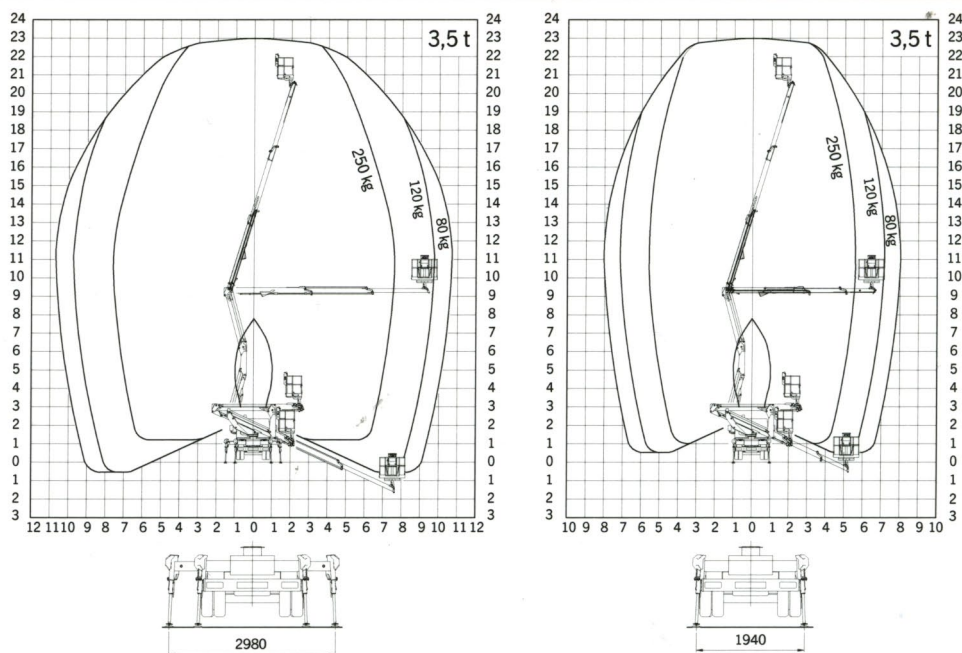
Altezza massima di lavoro	23,0 m
Altezza massima piano piattaforma	21,0 m
Sbraccio laterale massimo	10,8 m
Angolo operativo del braccio di lavoro	-25° a + 73°
Angolo rotazione colonna	370°
Angolo di rotazione piattaforma	2 x 90°
Portata massima in piattaforma	250 kg
Dimensioni cestello	1,4 x 0,85 x 1,1 m
Altezza in condizioni di marcia	2,89 m
Larghezza in condizioni di marcia	2,1 m
Lunghezza in condizioni di marcia	5,39 m
Conducibile con patente B	

OPTIONAL

Cestello in vetroresina
Faro di lavoro orientabile 60 W sul cestello
Isolamento 1000 V
Pompa elettrica d'emergenza 12V
Spondine in alluminio
Verniciatura su richiesta del cliente

DIAGRAMMI DI LAVORO

Piattaforma aerea dotata di 2 assetti stabilizzanti.



DIMENSIONI














PALFINGER

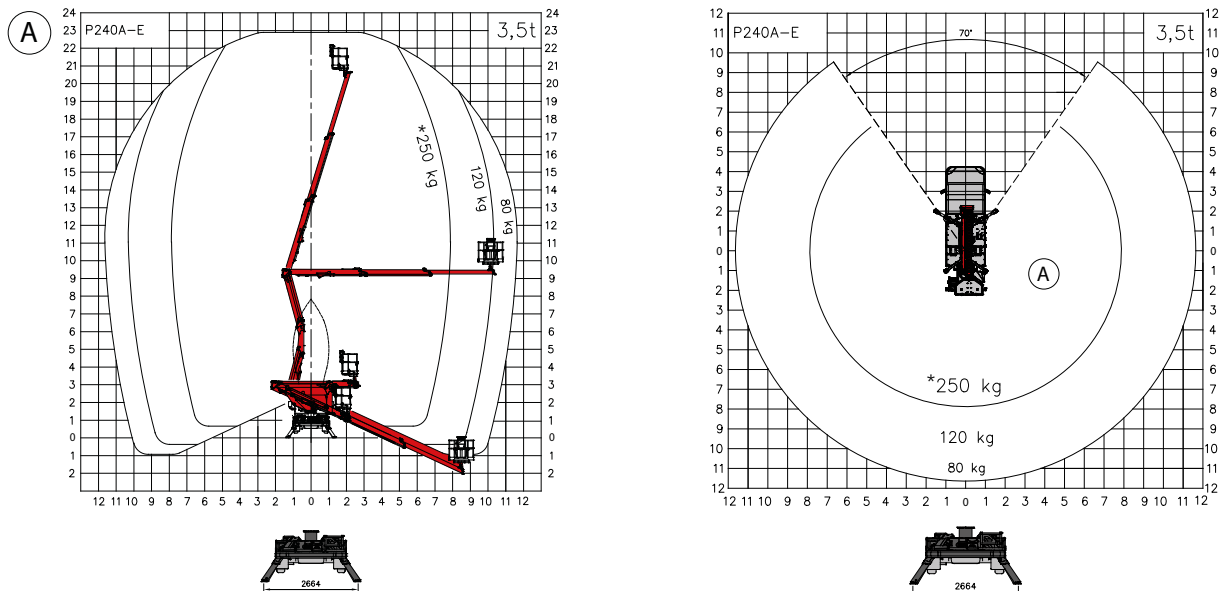
PALFINGER PLATFORMS ITALY SRL
 Sede amministrativa e operativa: Via E. DE NICOLA, 31
 41122 MODENA - ITALY - TEL. +39 (0)59252426
 EMAIL info@palfingerplatformsitaly.it
www.palfingerplatformsitaly.it

I dispositivi mostrati nelle foto presentano in alcuni casi allestimenti personalizzati e possono differire dall'allestimento standard. Nella costruzione è necessario rispettare le normative nazionali. Le dimensioni indicate non sono vincolanti. Con riserva di modifiche tecniche, errori ed errori di traduzione.

DONNÉES TECHNIQUES

	Hauteur de travail max.	22,9 m		Rotation panier	2x90°
	Hauteur maximale de travail par rapport sol	20,9 m		Dimensions du panier	m 1,4 x 0,84 x 1,1 h
	Extension max. de travail	11,6 m		Charge maximale admise dans le panier	250 kg - 230 kg (fibre de verre)
	Largeur stabilisateurs	2,6 m		Stabilisation	4 stabilisateurs à descente directe, type en « A »
	Angle opérationnel du bras principal	-25°/+73°		Poids total du véhicule	3,5 t
	Rotation tourelle	290°			

ZONE DE TRAVIL



Poids pouvant subir une variation +/- 5%
Données techniques pouvant subir une variation +/- 3%
*230 kg avec le panier en fibre de verre

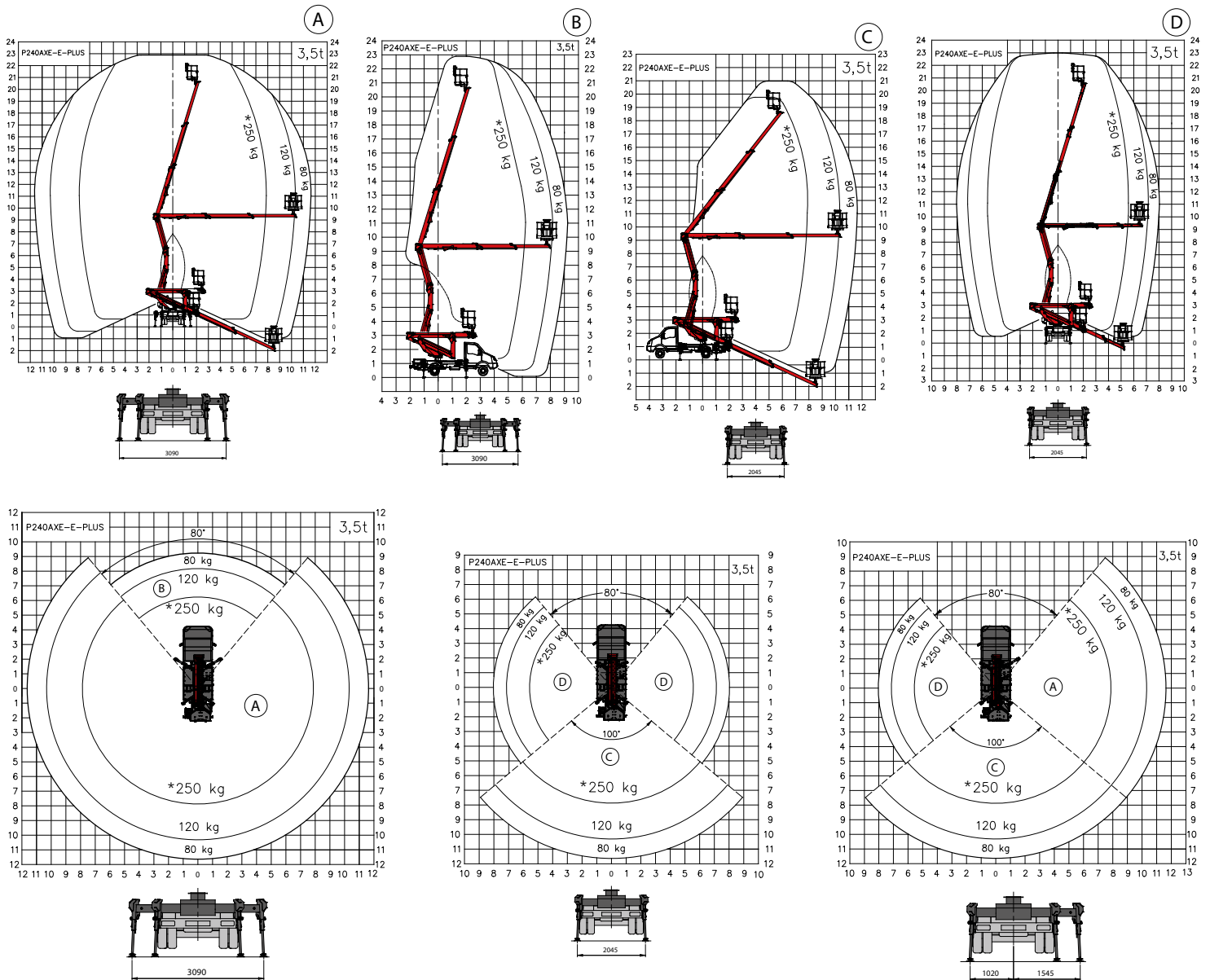
DIMENSIONS



TECHNICAL DATA

	Max. working height	22.9 m		Basket rotation	2x90°
	Max. working height from platform deck	20.9 m		Basket dimensions	m 1.4 x 0.84 x 1.1 h
	Max. working outreach	11.6 m		Max. load allowed per basket	250 kg - 230 kg (FBG)
	Min. outrigger width	2.0 m		Stabilisation	Vertical, with front arms extendable hydraulically
	Max. outrigger width	3.1 m			
	Operating angle of main arm	-25°/+73°		Gross vehicle weight	3.5 t
	Turret rotation	370°			

WORK AREA



Weights may vary by +/- 5%
 Technical data may vary by +/- 3%
 *230 kg for FBG basket