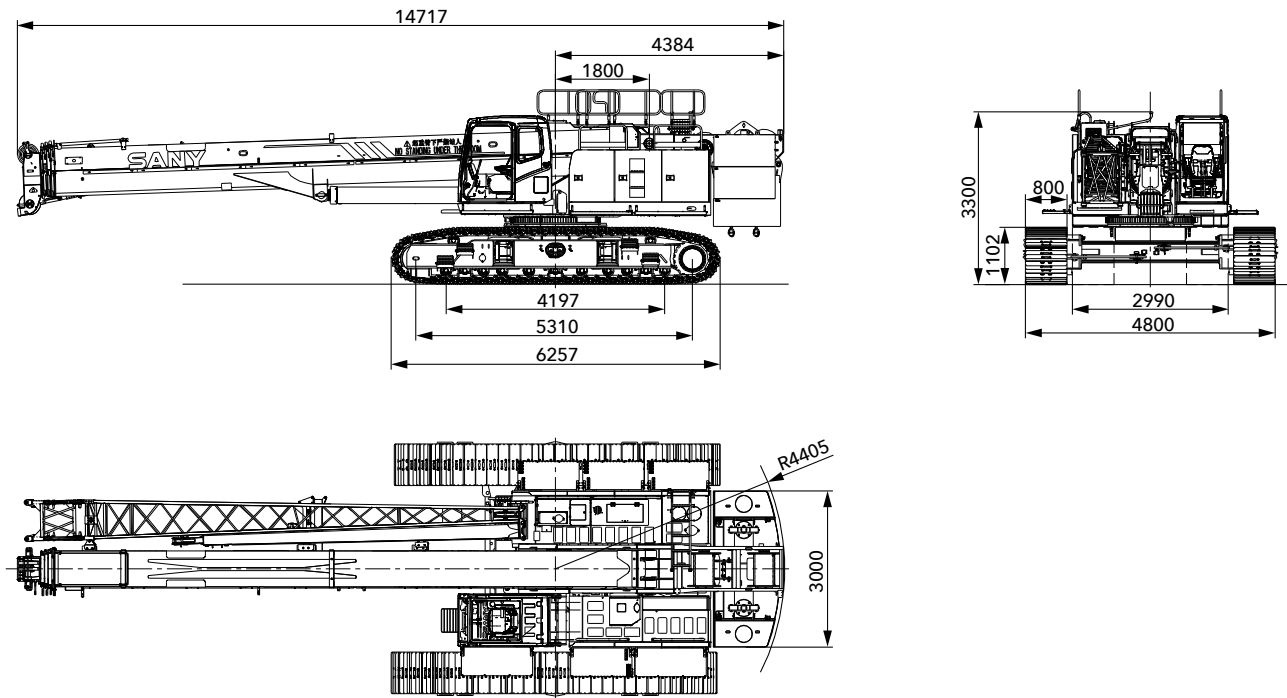
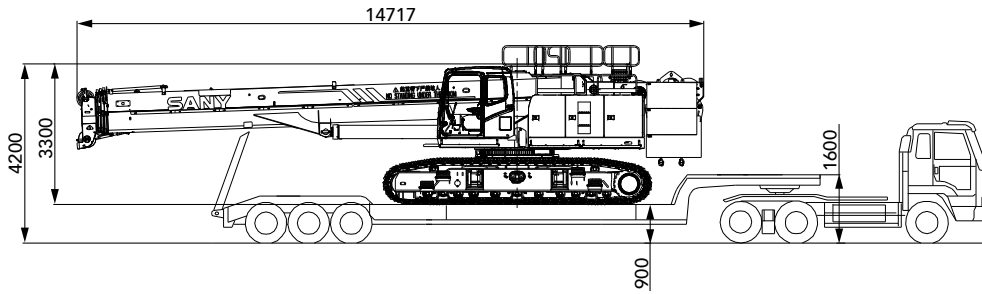


Outline Dimension

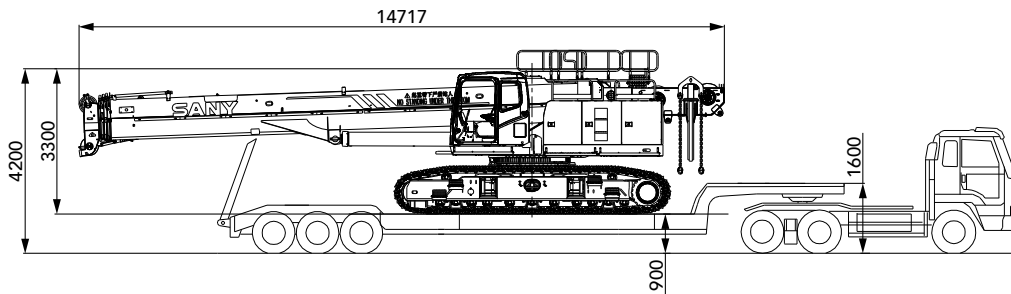
Transport Plan

- Transport mode 1: whole machine transport, total weight: 64.9t, L×W×H: 14.72m×3.0m×3.3m.

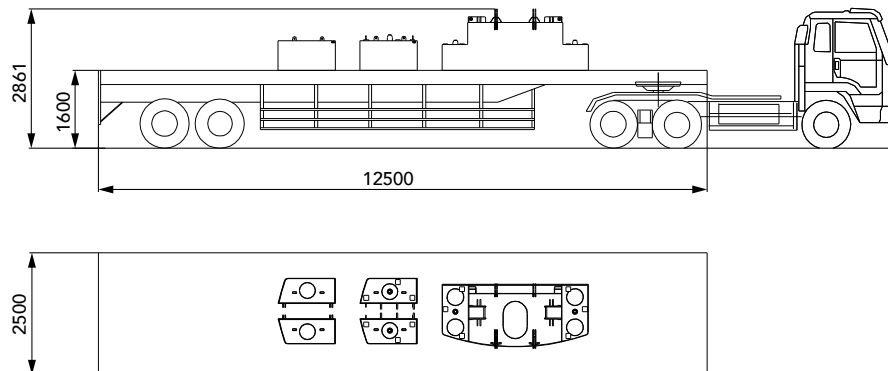


- Transport mode 2: remove counterweight

Trailer 1: basic machine, remove counterweight, total weight: 45.9t, L×W×H: 14.72m×3.0m×3.3m.



Trailer 2: rear counterweight, weight: 19t.



Working Radius of H Configuration

